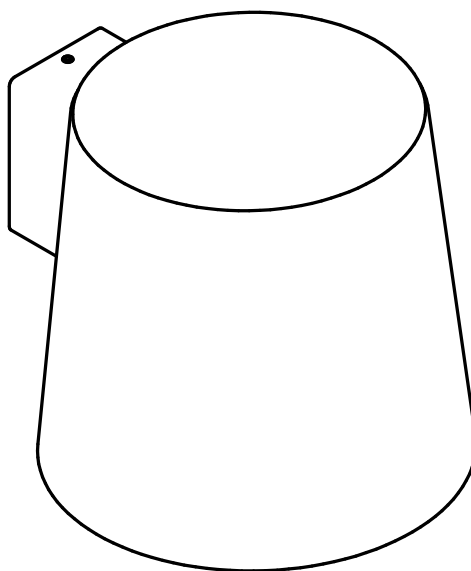
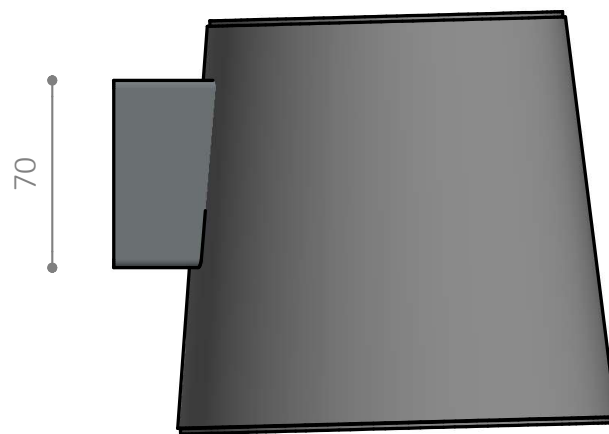
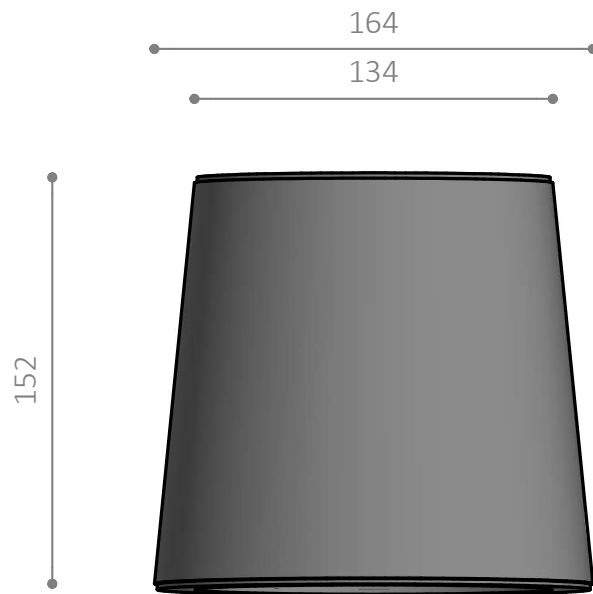


ANTO L1010-160

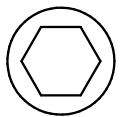
Væglampe / Wall lamp / Wandleuchte / Vägglampa



Monteringsvejledning / Mounting instructions /
Installationsanleitung / Installationsinstruktioner



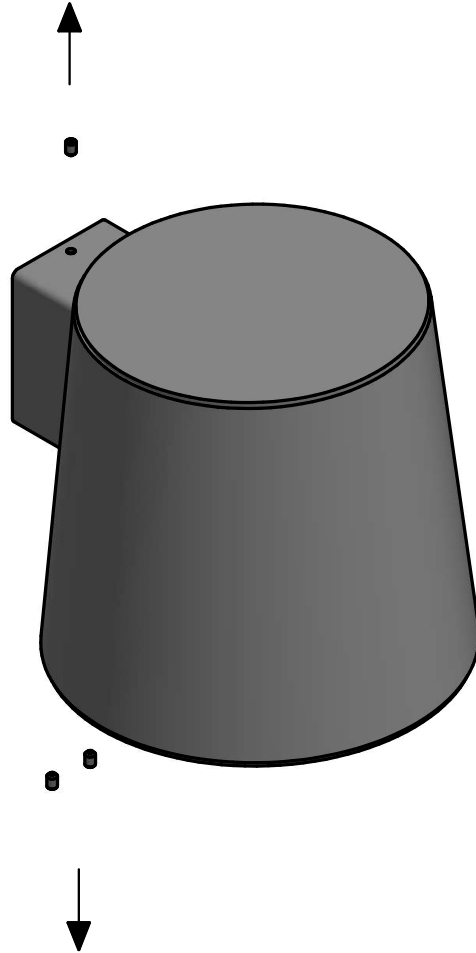
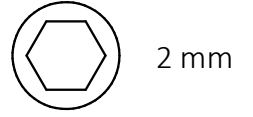
Værktøj / Tool / Werkzeug / Verktøj:



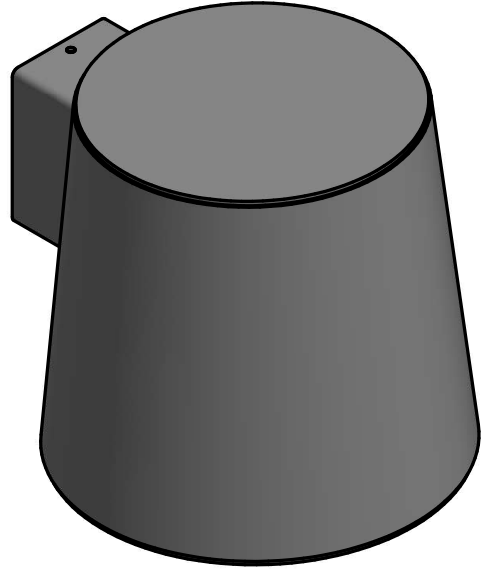
2 mm



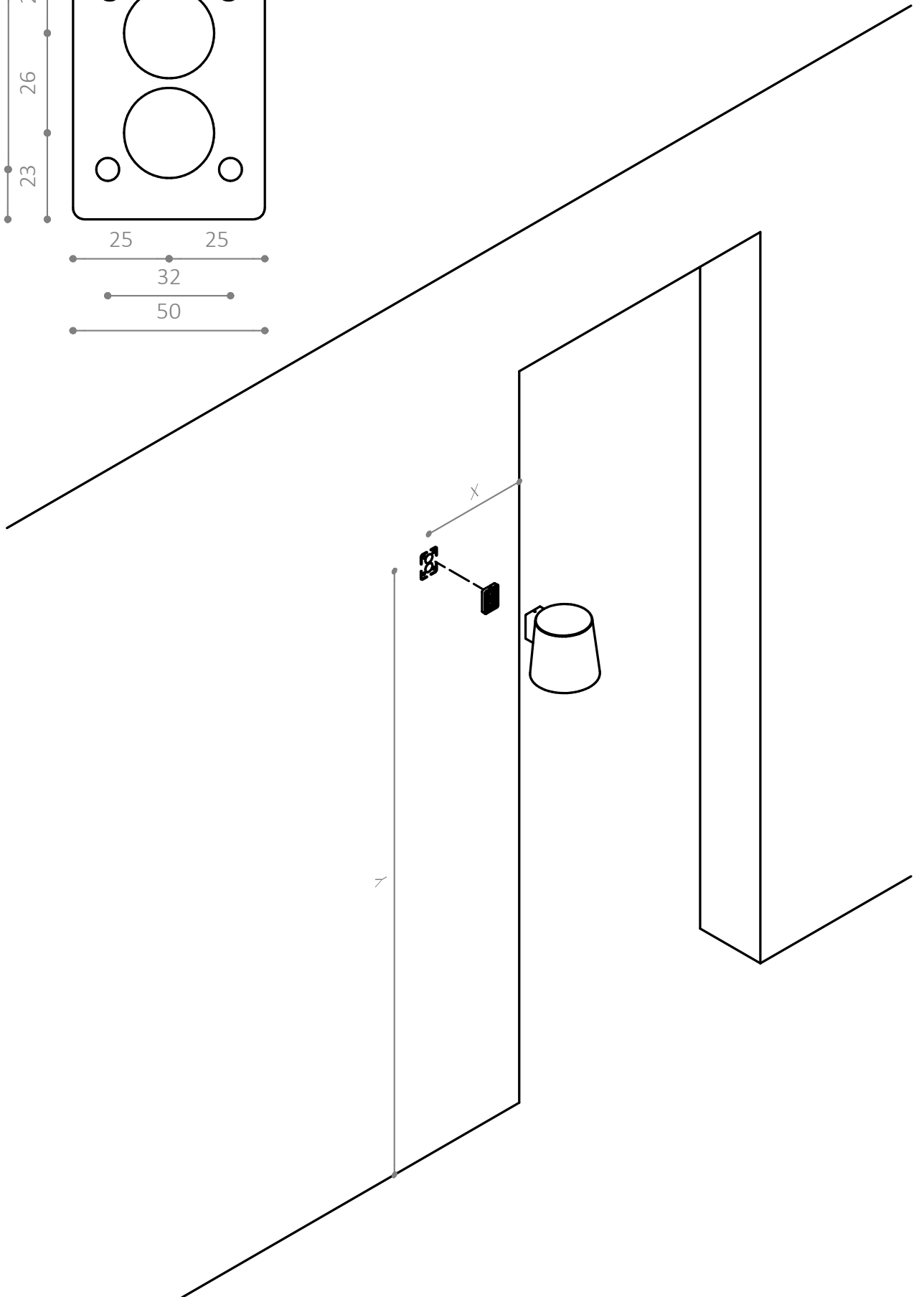
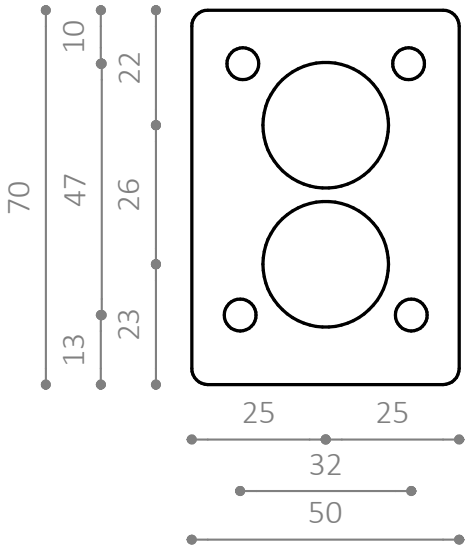
1



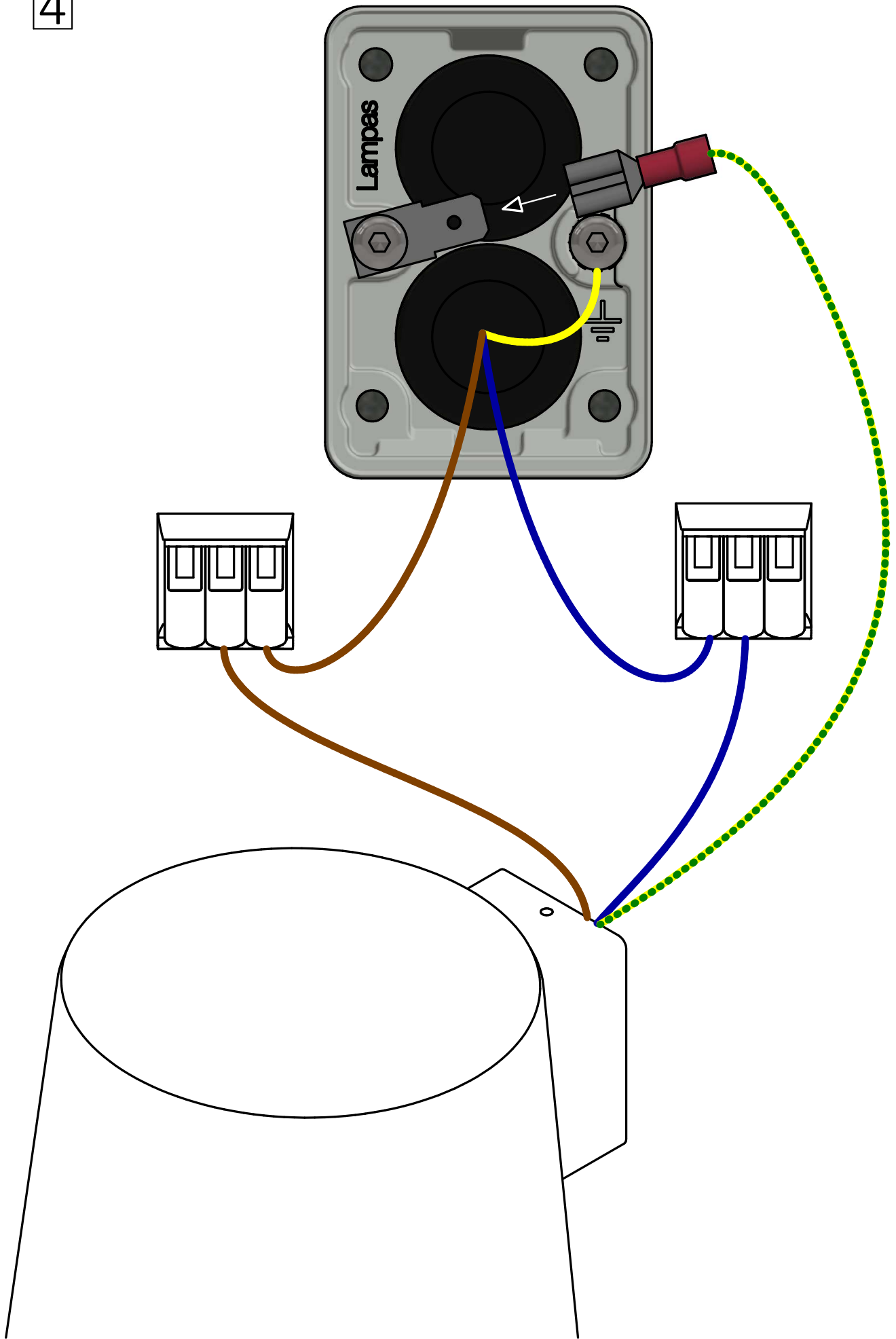
2



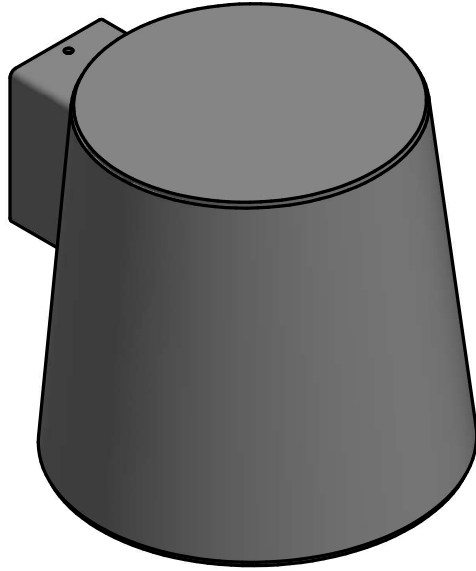
3



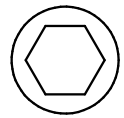
4



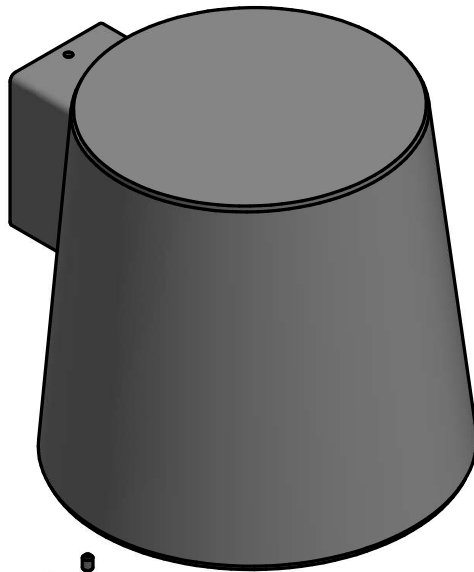
5

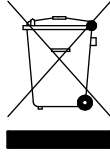


6



2 mm





LED



220-240 V 50-60 Hz



Isolationsklasse I / Insulation class I / Schutzklasse I / Isolationsklass I



IP56

IK

IK10



2,3 kg



Se vedligeholdelses vejledning / See maintenance instructions / Siehe
Wartungsanweisungen / Se underhållsinstruktioner



Montering/udskiftning må kun udføres af producenten eller aut. el-installatør /
Installation/replacement must only be carried out by the manufacturer or by an
electrician / Die Installation/der Austausch darf nur vom Hersteller oder von
einem Elektriker durchgeführt werden / Installation / utbyte får endast utföras av
tillverkaren eller av en behörig elektriker